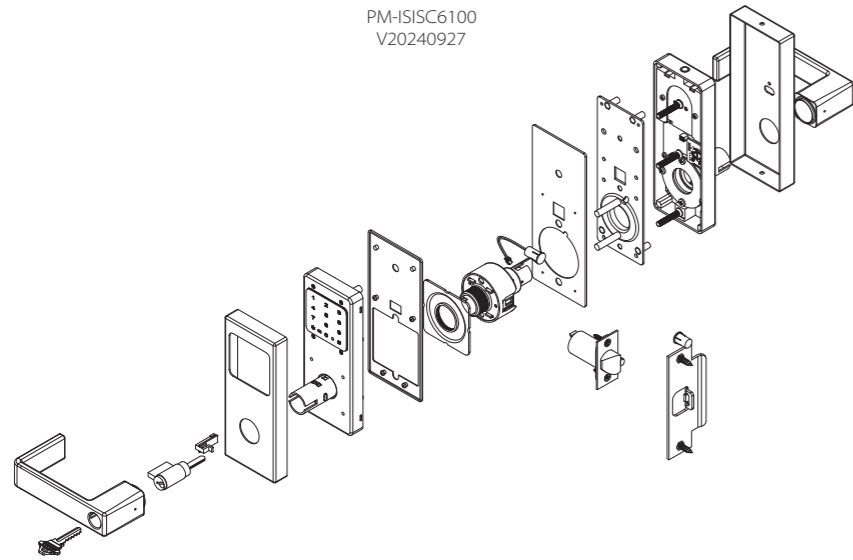




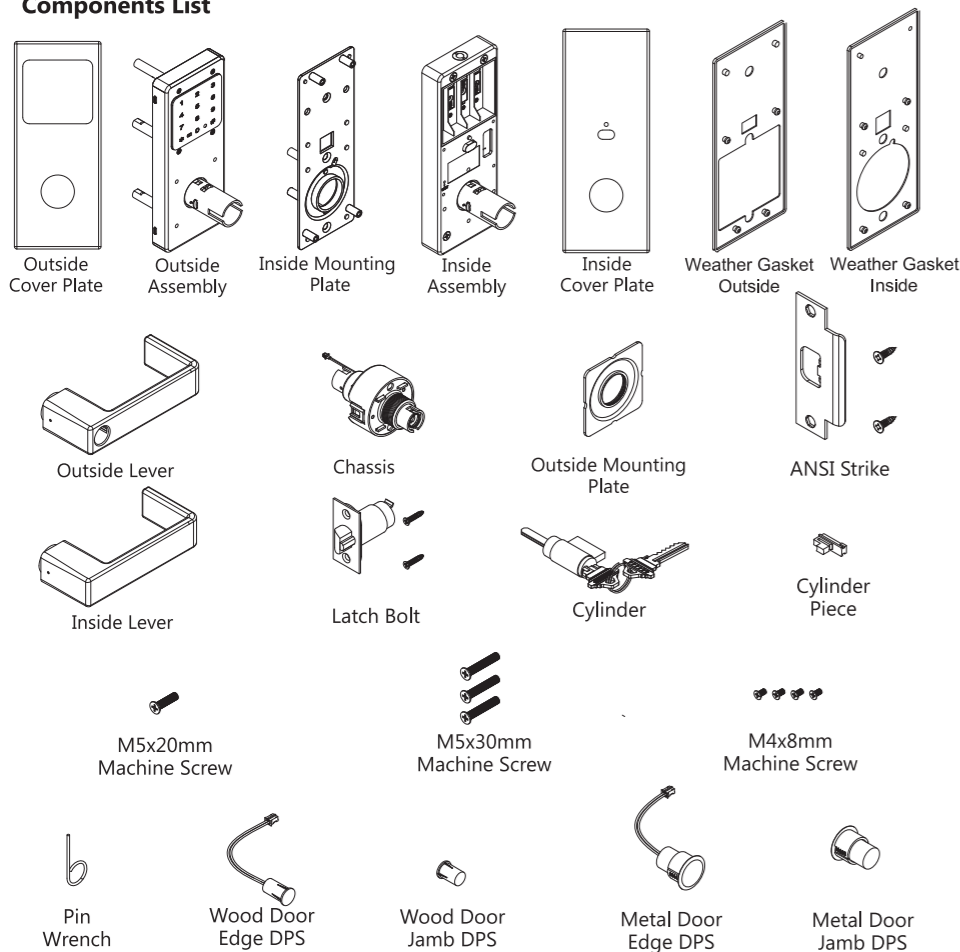
Cylindrical Smart Lock Installation Instructions

PM-ISISC6100
V20240927

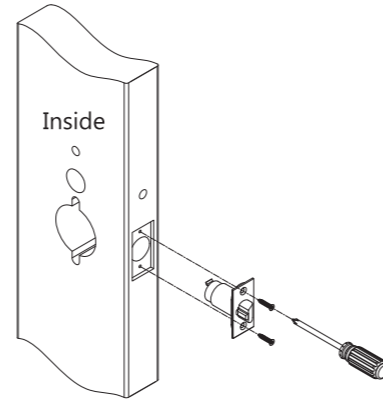


www.inoxproducts.com

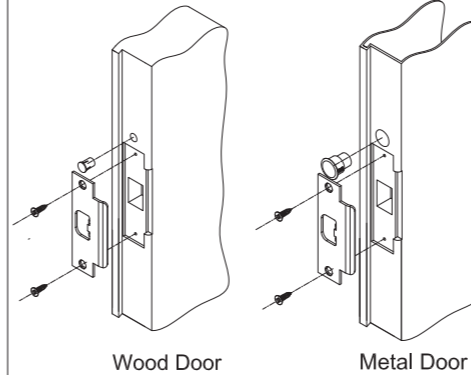
Components List



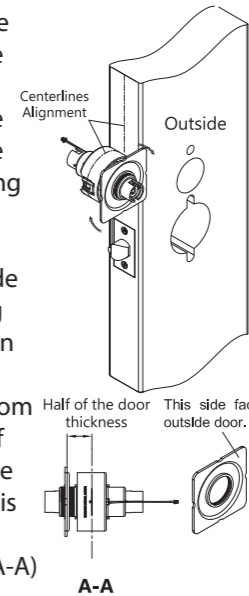
Step 1: Install latch bolt. Attach the faceplate with a Phillips Screwdriver.



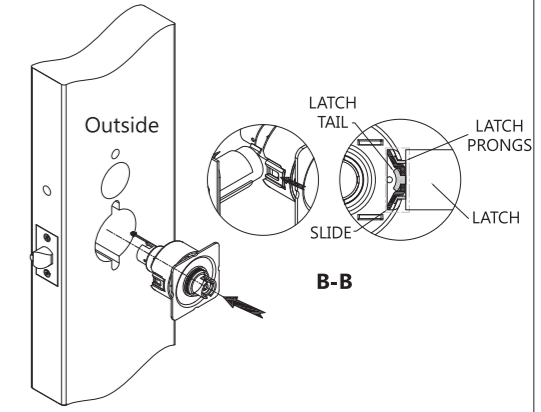
Step 2: Install strike and secure with 2 screws. (Optional) Install the Door Position Switch DPS into the frame.



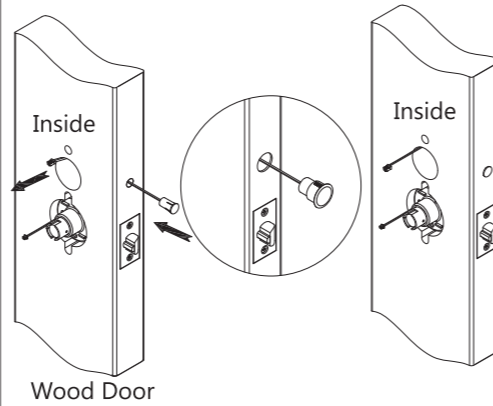
Step 3: Align the centerline of the chassis with the centerline of the door. Thread the outside mounting plate onto the chassis and turn until the backside of the mounting plate sits flush on door face. The clearance from the centerline of the chassis to the mounting plate is half the door thickness. (See A-A)



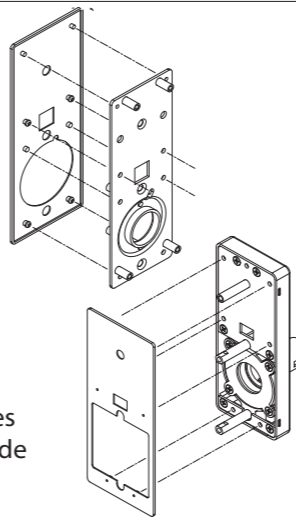
Step 4: Install the chassis in the bottom bore prep. Guide the motor cable through the cutout. Make sure the latch is inserted into the slide, and the latch prongs engage the chassis housing



Step 5: (Optional) Install the door edge DPS. Press the sensor into the top hole on the edge of the door and pull the wires the top hole on the door face.

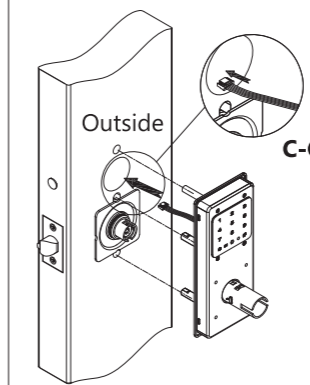


Step 6: (Optional) Install Interior Weather Gasket. Ensure all bumps on the gasket are depressed into the round holes on the inside mounting plate.

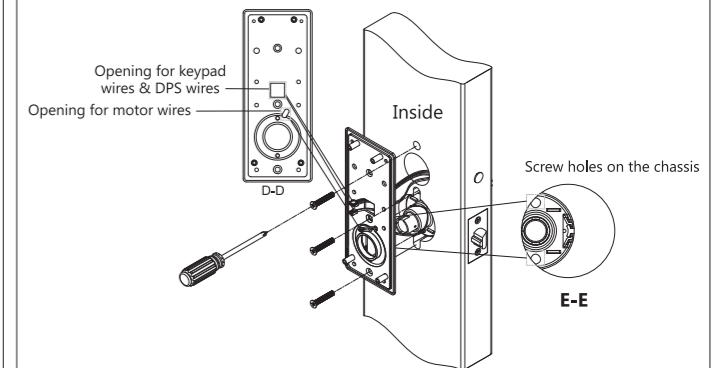


(Optional) Install Exterior Weather Mounting the weather gasket onto the outside sub-rose. Ensure all bumps on the gasket are depressed into the round holes on the sub-rose.

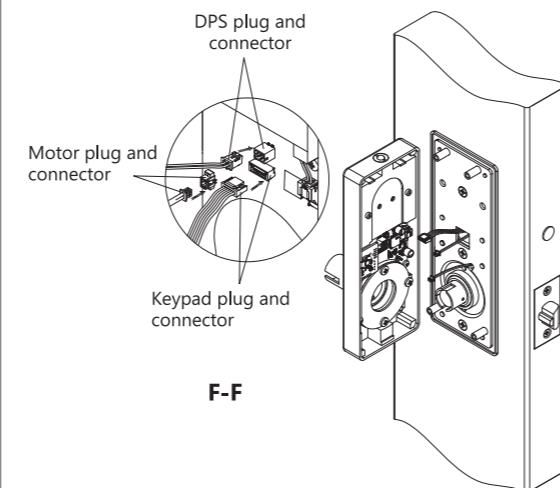
Step 7: Install outside trim assembly. Make sure the vertical bolts fit through the notches cutout in the bottom prep hole. Pull wires from the keypad through the top prep hole. (See C-C)



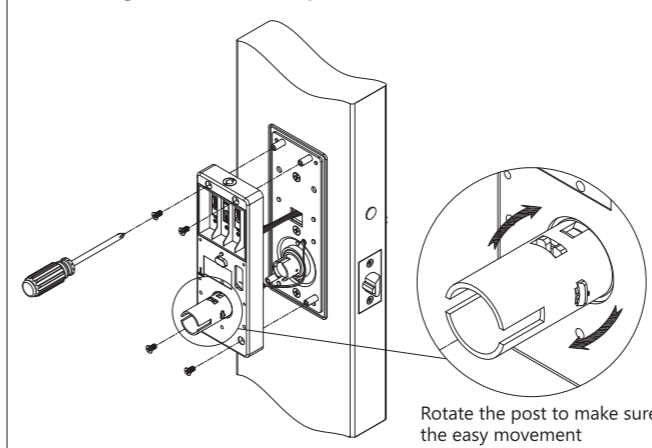
Step 8: Install the inside mounting plate. Route the wires (Keypad, DPS & motor wires) through cutouts indicated on mounting plate. (See D-D) Make sure the two bolts on the inside mounting plate pass through the vertically positioned screw holes on the chassis. (See E-E) Secure the inside mounting plate with screws provided.



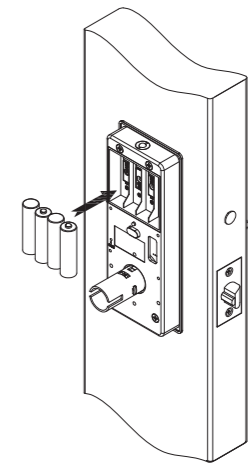
Step 9: Plug in the wires (keypad, DPS and motor wires) on the inside assembly. (See F-F)



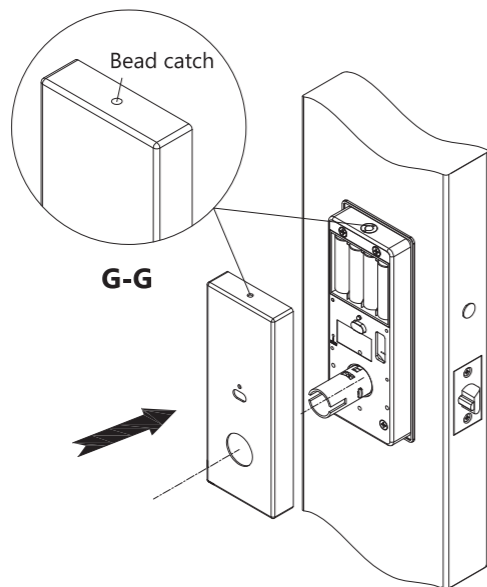
Step 10: Install the inside assembly with 4 screws. Be careful to not pinch wires. Once inside trim is secured, rotate the post to make sure there is no binding. Post should easily rotate back and forth, if jammed please check alignment from steps 3 & 4.



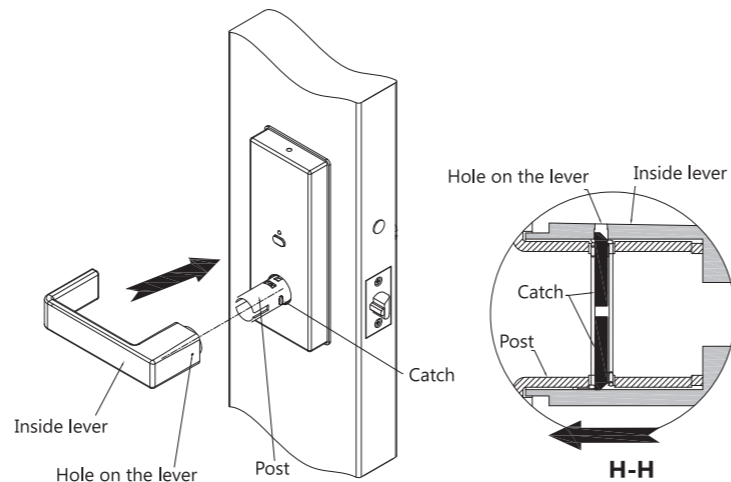
Step 11: Install the (4) AA batteries. Align the batteries with the correct polarity. The keypad will light up and the motor will run.



Step 12: Install the inside escutcheon plate first and make sure it snaps into place via beads on the sub rose. (See G-G) Install the washer.

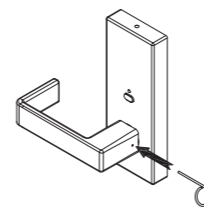


Step 13: Press the inside lever into the post. Make sure the hole on the side of the lever is seated and locked in the catch on the post. (See H-H)

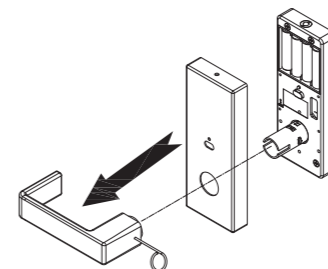


Replace Batteries/Reset the program

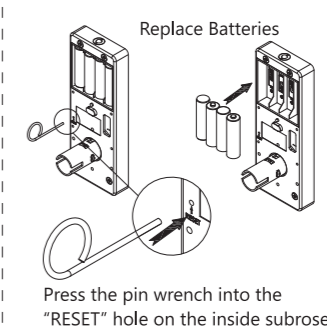
1: Press the pin wrench into the hole on the side of the lever.



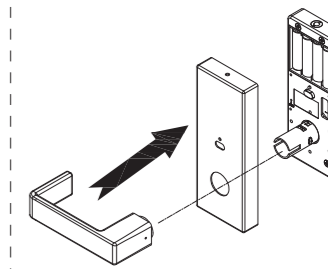
2: Pull off the lever and the inside escutcheon.



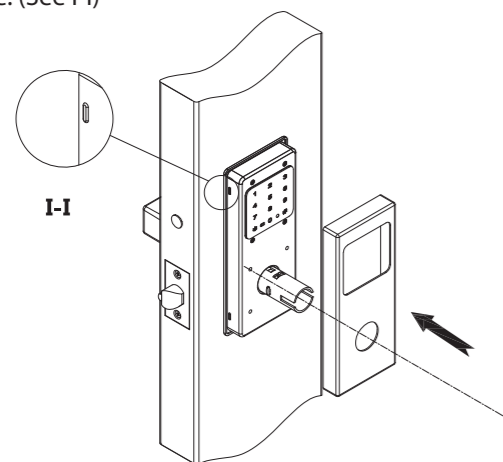
3: Replace Batteries/Reset the program.



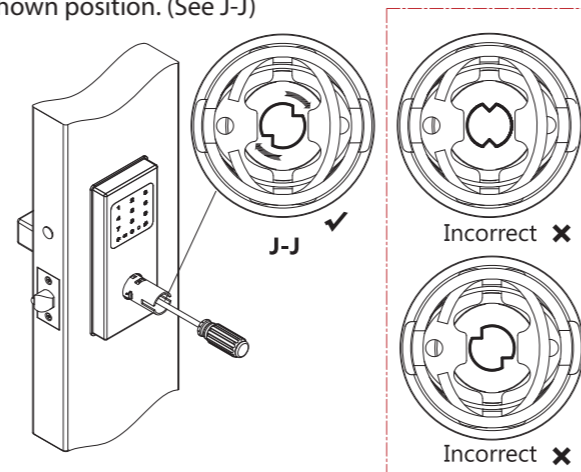
4: Install the inside escutcheon and the lever.



Step 14: Install the outside escutcheon plate first and make sure it snaps into place via the bumps on the sub rose. (See I-I)

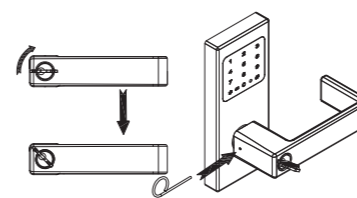


Step 15: Use a screw driver to rotate the cam in the post on the outside assembly until the cam is located in the shown position. (See J-J)

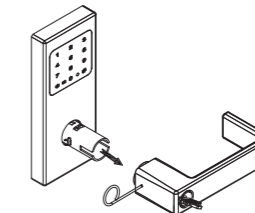


Change the handing of outside lever

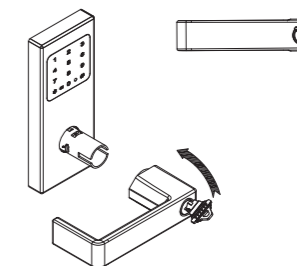
1: Rotate the key clockwise approximately 45 degrees. Press the pin Wrench into the hole on the side of the lever.



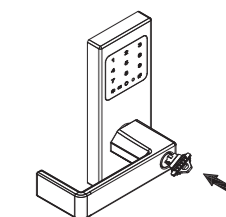
2: Pull off the lever.



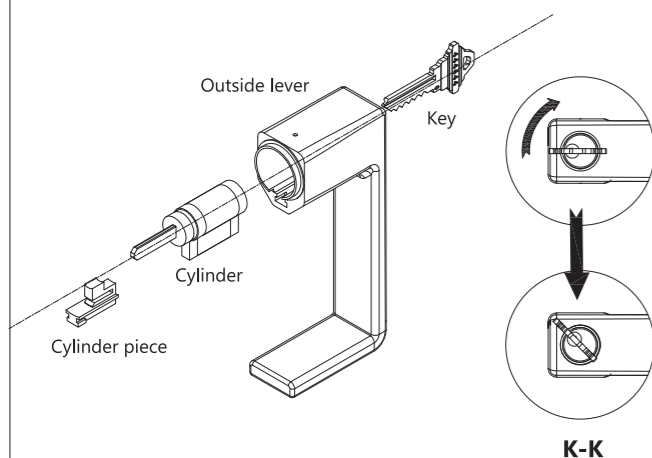
3: Rotate the lever in the opposite direction to change the handing.



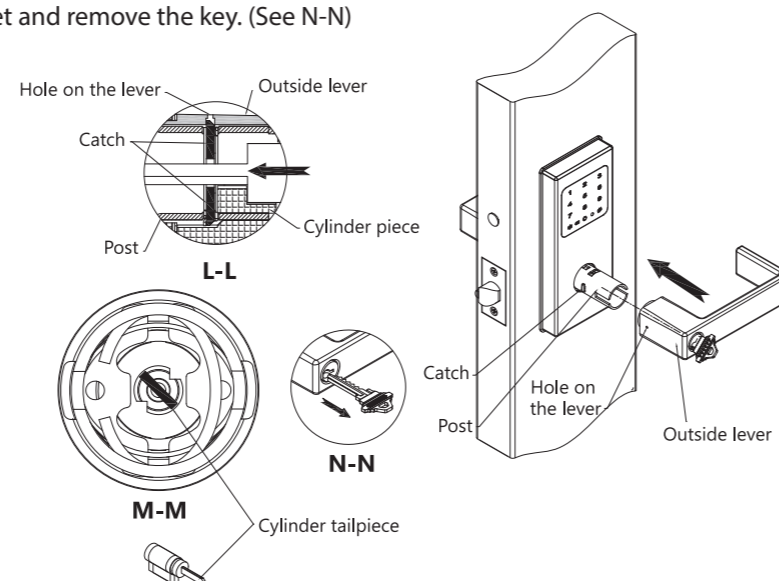
4: Reinstall the lever.



Step 16: Cylinder and outside lever installation. Insert cylinder into the lever first, and then insert the cylinder piece into the notch in the lever. Insert the key and rotate the key clockwise approximately 45 degrees. (See K-K)

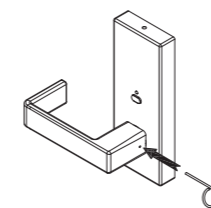


Step 17: Press the outside lever into the post. Make sure the hole on the side of the lever is seated and locked into the catch on the post. (See L-L) Cylinder tailpiece goes through the cam. (See M-M) Reset and remove the key. (See N-N)

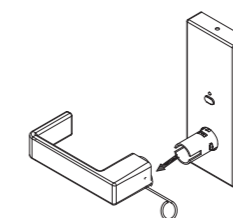


Change the handing of inside lever

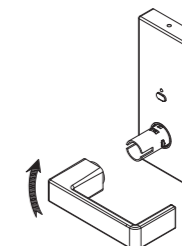
1: Press the pin wrench into the hole on the side of the lever.



2: Pull off the lever.



3: Rotate the lever in the opposite direction to change the handing.



4: Reinstall the lever.

