

# IST-IC6500 SERIES

## IST SECTIONAL KEYPAD



### SECTIONAL SPECIFICATIONS

<b>Door</b>	1-3/4" (44mm) standard
<b>Thickness</b>	Thick Door Kits available
<b>Backset</b>	2-3/8" (60mm) 2-3/4" (70mm)
<b>Cylinder</b>	1" RIM Cylinder, 2 keys included. Keying service available
<b>Deadbolt</b>	1" throw with hardened roller pin UL 3 Hr Fire Rated Bolt Standard
<b>Keypad</b>	Digital Touchscreen
<b>Material</b>	Stainless Steel Trim Brass Bolt and Cylinder

### DPS SPECIFICATIONS

<b>Voltage</b>	100V AC/DC
<b>Current Draw</b>	0.5mA
<b>Power</b>	10V
<b>Dimension</b>	12mm x 18.5mm
<b>Wood Doors</b>	DPS-33A-W-WH Standard
<b>Metal Doors</b>	DPS-36-M-BK Additional line item

## IST FULL PLATE KEYPAD



### FULL PLATE SPECIFICATIONS

<b>Door</b>	1-3/4" (44mm) standard
<b>Thickness</b>	Thick Door Kits available
<b>Backset</b>	2-3/8" (60mm) 2-3/4" (70mm)
<b>Center Distance</b>	4" (101mm) 5-1/2" (133mm)
<b>Handing</b>	Specify handing for all functions. Latchbolt is field reversible
<b>Hub and Spindle</b>	5/16" (8mm) square
<b>Latch Faceplate</b>	1" x 2-1/4" standard square corner
<b>Cylinder</b>	1" RIM Cylinder, 2 keys included. Keying service available
<b>Keypad</b>	Digital Touchscreen

# IST SMART TUBULAR INTERCONNECT ENTRY SET

## APPLICATION

INOX Interconnect Tubular Lock is designed with interconnect function combining the added security of a tubular deadbolt with the single action egress of a lever set.

Smart access technology for apartment unit, gym, laundry or office doors for multi-family/mixed-use properties, multi-tenant offices, retail/commercial facilities, or high-end residential entry doors.

## FINISH

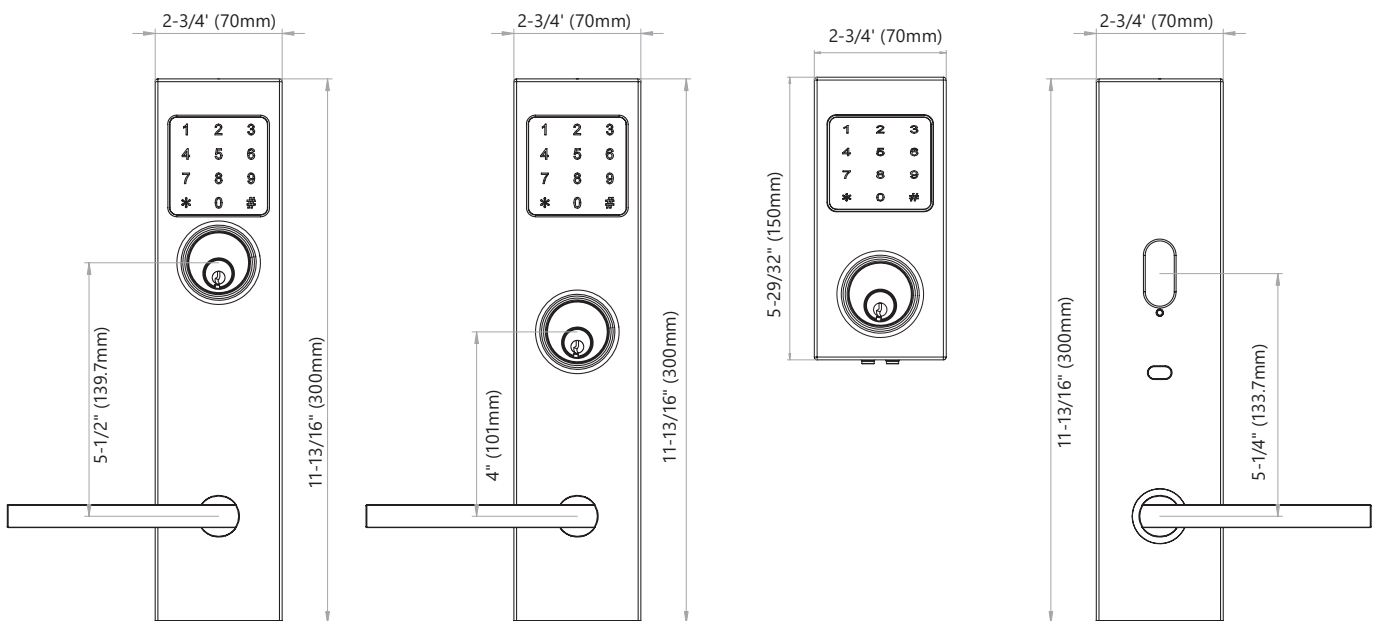
- 32D Satin Stainless Steel
- 32 Bright Stainless Steel
- 19G Graphite Black
- PVD4 Satin Brass available in 205, 221, 243, 244, 276, 318, 319, 320, 321, 346 and 509 levers designs
- CeraMax Ceramic Coating: C19G Graphite Black, C19 Flat Black, CGY Stormy Grey, CDB Dark Bronze
- Please see Finish Solutions on INOX website for special order finishes

## FEATURES

- BHMA/ANSI Grade 2, UL 3-hr fire-rated TL4 latch and fire-rated bolt that can be remotely locked, unlocked, and programmed using smartphone or BLE/WIFI gateway.
- Unique single design available for new installations or retrofits existing door prep.
- Entry function with easily programmable Privacy and Passage modes
- Multi-credential support: Passcodes, RFID FOB/Card/ Wristband, and Smart Phone
- Simple door prep compared to mortise lock
- Simple Touch-to-Lock, no device or keys needed for secure opening
- Supports 13.56MHz RFID
- Remote Access and Management via Wi-Fi and Low Energy Bluetooth
- Integrates seamlessly with INOX Smart App and Access Management Portal
- Cloud-based APP with multi-level user roles
- Audit trails with 100,000 records shows all Lock and Unlock activities
- Inside Egress lever retracts the deadbolt and the latch at the same time

## DIMENSIONS


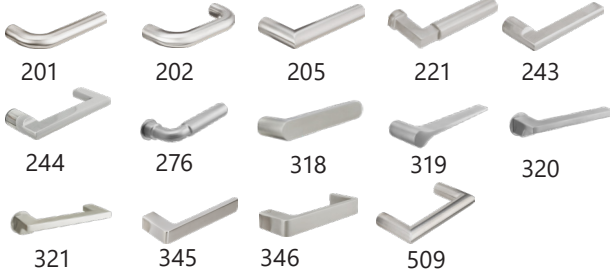
- Interior plate is the same for IST full plate keypad and IST sectional keypad.
- Full plate escutcheon with keypad is available in 4" and 5.5" center to center door prep.
- Sectional Keypad can be paired with any exterior trim.



# HOW TO ORDER IST SMART TUBULAR ENTRY SET

## HOW TO ORDER FULL PLATE KEYPAD

Use the sequence below to order locksets. Please see price book for parts or additional service upcharges.

INOX Smart Tubular	Plate	Lever	Backset	Cylinder	Center to Center	Thumbturn	Finish	Handing
<b>IST</b> <b>1</b>	<b>-SFK</b> <b>2</b>	<b>243</b> <b>3</b>	<b>-C473F</b> <b>4</b>	<b>5</b>	<b>-CT5</b> <b>6</b>	<b>-TT02</b> <b>7</b>	<b>-32D</b> <b>8</b>	<b>-LH</b> <b>9</b>
<b>PLATE</b>		<b>LEVER</b>			<b>4 BACKSET</b>			
					<b>4 BACKSET</b> C463F = 2-3/8" Backset (Fire Rated Latch) C473F = 2-3/4" Backset (Fire Rated Latch)			
SFK								

### 5 CYLINDER INCLUDES COLLAR

LC = Less Cylinder

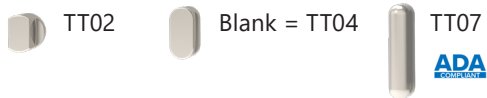


Blank = Standard RIM 1" Cylinder (CRB105)

### 6 CENTER TO CENTER

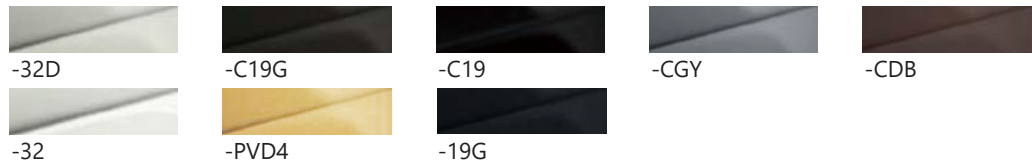
CT4 = 4" Center to Center  
 CT5 = 5-1/2" Center to Center

### 7 THUMBTURN



### 8 FINISH

Standard:



PVD4 is available for 205, 221, 243, 244, 276, 318, 319, 320, 321, 346 and 509 lever designs.

### 9 HANDING

RH = Right Hand

LH = Left Hand


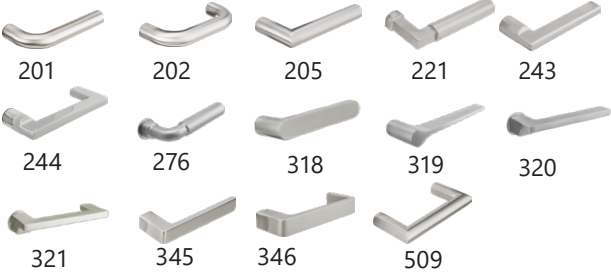

RHR = Right Hand Reverse

LHR = Left Hand Reverse

# HOW TO ORDER IST SMART TUBULAR ENTRY SET

## HOW TO ORDER SECTIONAL KEYPAD

Use the sequence below to order. Please see price book for parts or additional service upcharges.

Series	Outside Trim		Inside Trim		Backset	Cylinder	CTC	Keypad	Thumbturn	Finish	Handing
	Rose	Lever	Plate	Lever							
<b>IST</b>	<b>-SE</b>	<b>243</b>	<b>-SFK</b>	<b>243</b>	<b>-C473F</b>		<b>-CT4</b>	<b>-K1</b>	<b>-TT04</b>	<b>-32D</b>	<b>-LH</b>
<b>1</b>	<b>2</b>	<b>3</b>	<b>4</b>	<b>3</b>	<b>5</b>	<b>6</b>	<b>7</b>	<b>8</b>	<b>9</b>	<b>10</b>	<b>11</b>
<b>ROSE</b>		<b>LEVER</b>				<b>PLATE</b>					
 RA SE		 201 202 205 221 243 244 276 318 319 320 321 345 346 509				 SFK					

### 5 BACKSET

C463F = 2-3/8" Backset (Fire Rated Latch)  
C473F = 2-3/4" Backset (Fire Rated Latch)

### 6 CYLINDER INCLUDING COLLAR

LC = Less Cylinder



Blank = Standard RIM 1" Cylinder (CRB105)  
includes collar

### 7 CENTER TO CENTER

CT4 = 4" Center to Center  
CT5 = 5-1/2" Center to Center

### 8 KEYPAD



K1

### 9 THUMBTURN



TT02



Blank = TT04



TT07



### 10 FINISH

Standard:



-32D



-C19G



-C19



-CGY



-CDB



-32



-PVD4



-19G

PVD4 is available for 205, 221, 243, 244, 276, 318, 319, 320, 321, 346 and 509 lever designs.

### 11 HANDING

RH = Right Hand

LH = Left Hand

RHR = Right Hand Reverse

LHR = Left Hand Reverse