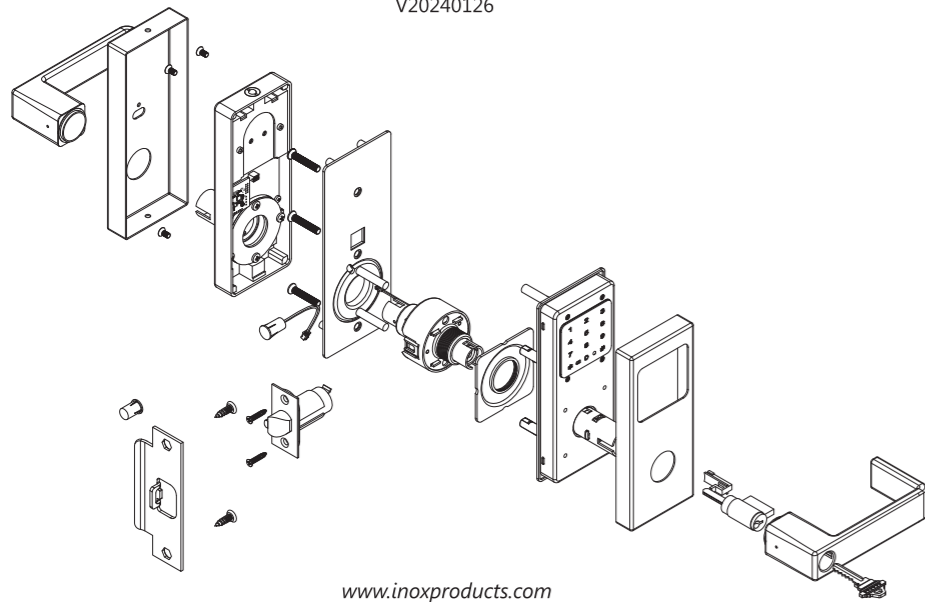




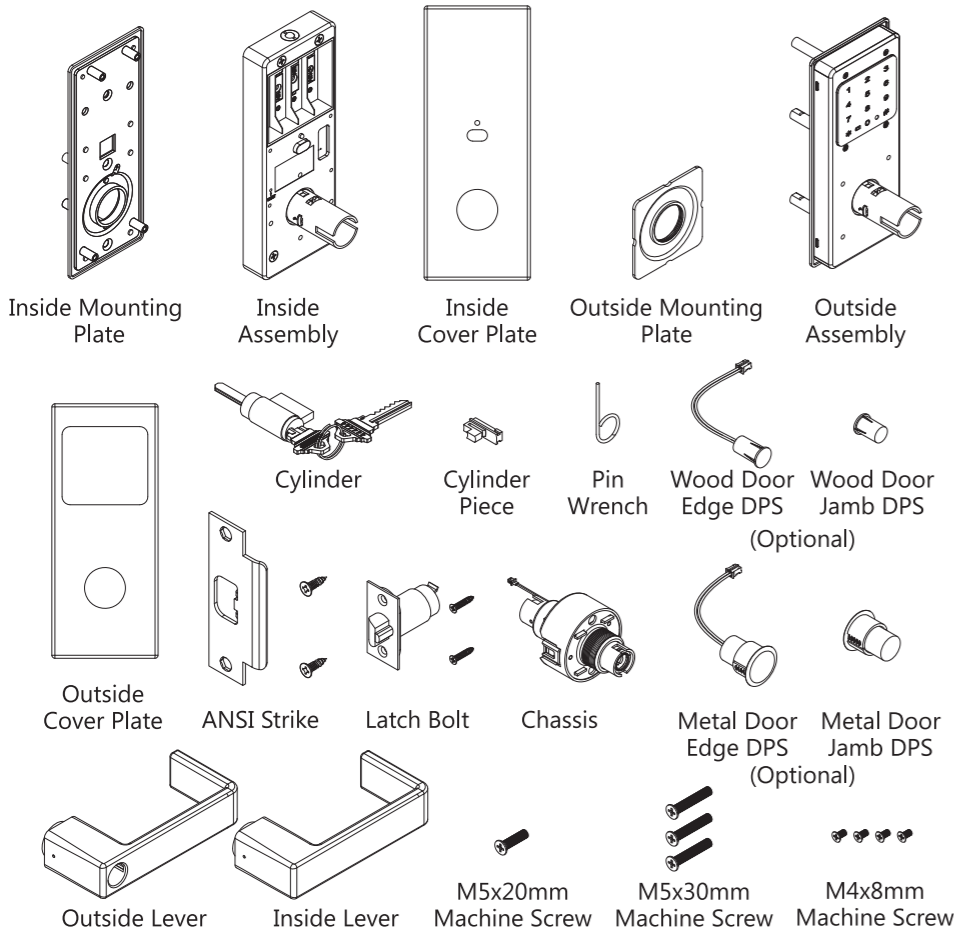
Cylindrical Smart Lock Installation Instructions

PM-ISISC6100
V20240126

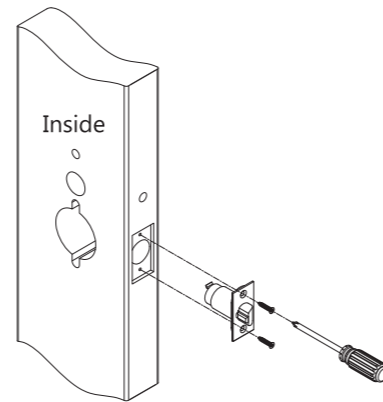


www.inoxproducts.com

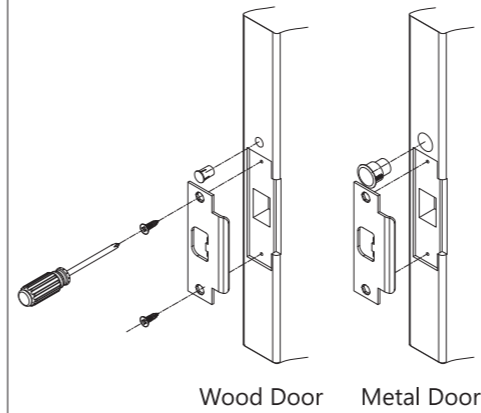
Components List



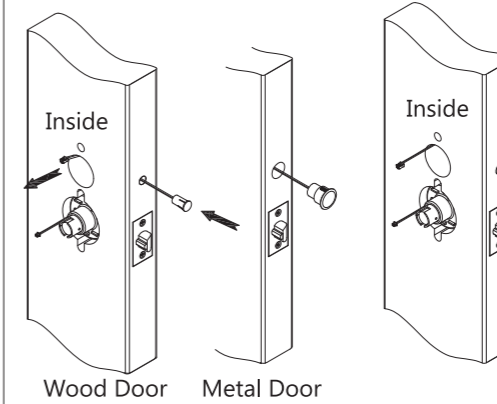
Step 1: Install latch bolt. Attach the faceplate with a Phillips Screwdriver.



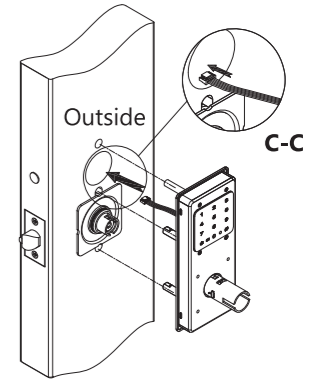
Step 2: Install strike and secure with 2 screws. Install the Door Jamb DPS.



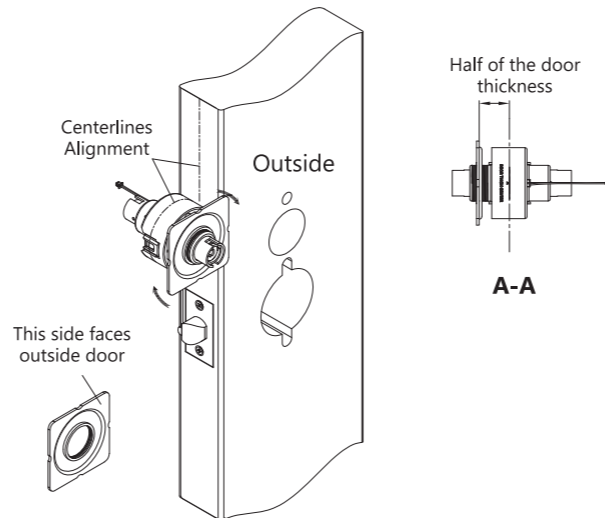
Step 5: Install the Door Position Switch (DPS). Press the sensor into the top hole on the edge of the door and pull the wires through the top hole on door face.



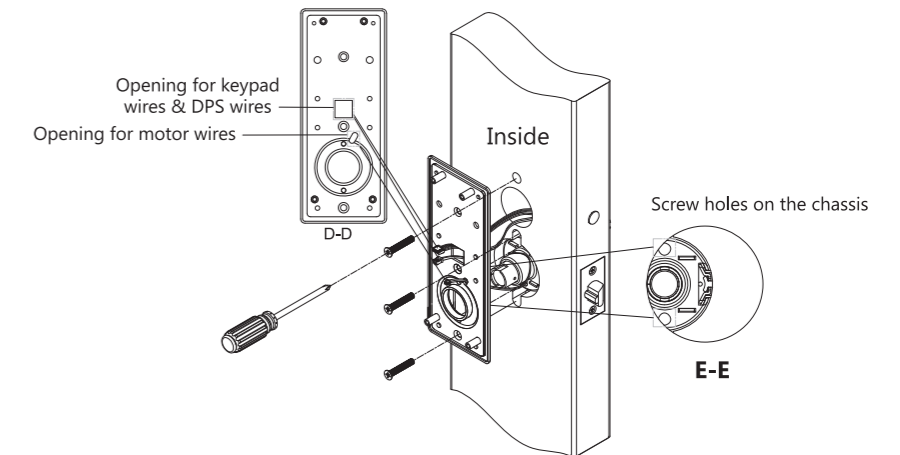
Step 6: Install outside trim assembly. Make sure the vertical bolts fit through the notches cutout in the bottom prep hole. Pull wires from the keypad through the top prep hole. (See C-C).



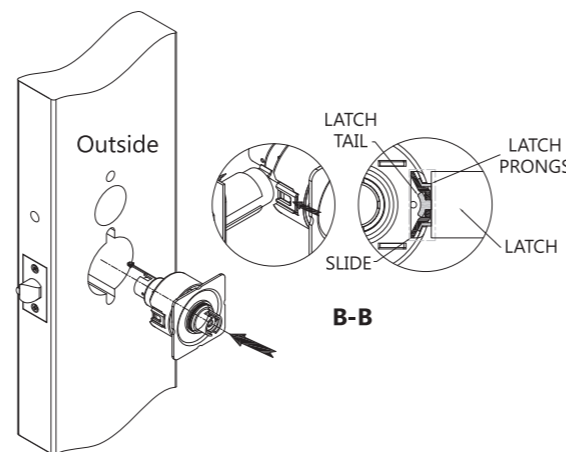
Step 3: Align the centerlines of the chassis with the centerline of the door. Thread the outside mounting plate onto the chassis and turn until the backside of the mounting plate sits flush on door face (the clearance from the centerline of the chassis to the mounting plate is the half of the door thickness. (See A-A).



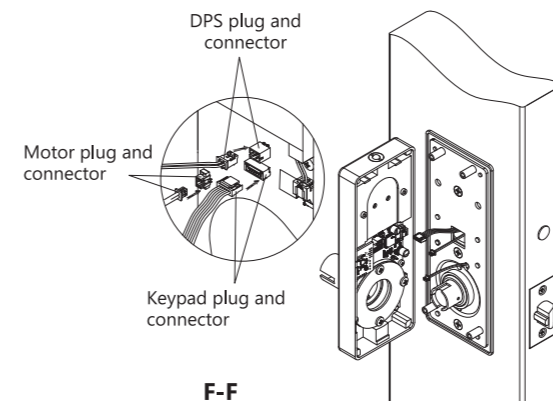
Step 7: Install the inside mounting plate. Route the wires (Keypad Wires & DPS Wires pass through top square hole. Motor wires pass through oblong hole below.) (See D-D). Make sure the two bolts used to secure the mounting plate pass through the vertically positioned screw holes in the chassis. (See E-E). There is one additional screw to fix inside mounting plate above top hole prep.



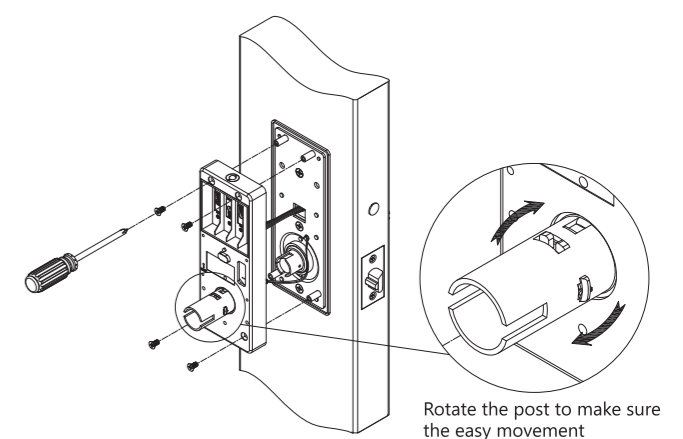
Step 4: Install the chassis in the bottom bore prep. Guide the motor cable through the cutout. Make sure the latch tail is inserted into the slide, and the latch prongs engage the chassis housing. (See B-B).



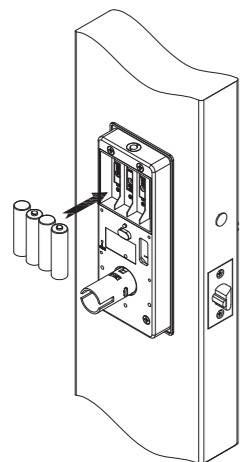
Step 8: Plug in the wires to the inside trim. There are designated connection points for DPS, Keypad & Motor wires. Please follow F-F Diagram for specific details.



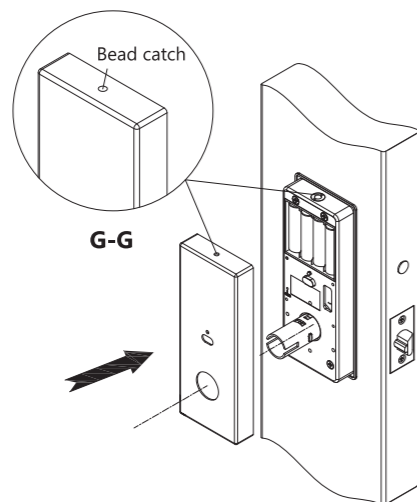
Step 9: Install the inside trim assembly with 4 screws. Be careful not to pinch the wires. Once inside trim is secured, rotate the post to make sure there is no binding. Post should easily rotate back and forth, if jammed please check alignment from steps 3 & 4.



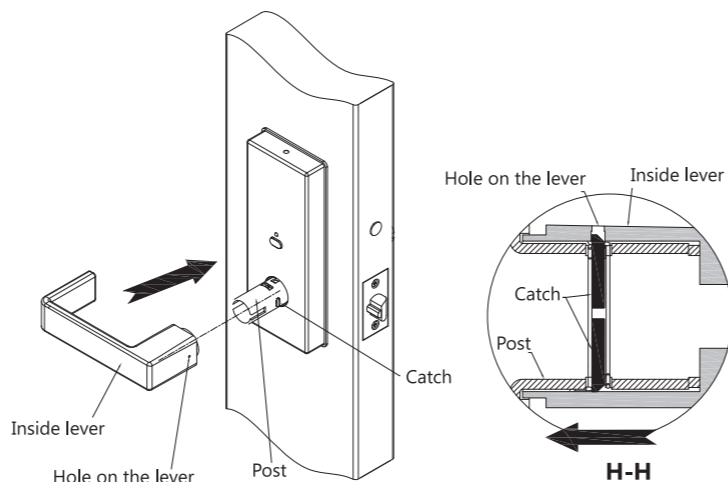
Step 10: Install the (4) AA batteries. Align the batteries with the correct polarity. The keypad will light up and the motor will run.



Step 11: Install the inside escutcheon plate first and make sure it snaps into place via the beads on the sub rose. (See G-G).

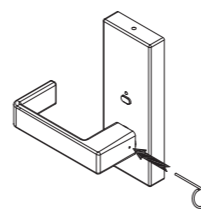


Step 12: Press the inside lever towards the post. Make sure the hole on the side of lever is seated and locked in the catch on the post. (See H-H).

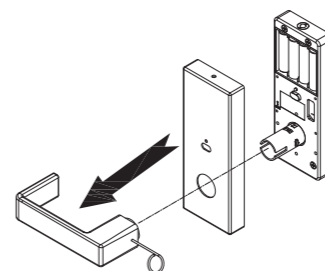


Replace Batteries/Reset the program

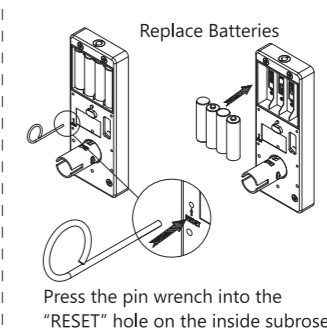
1: Press the pin wrench into the hole on the side of the lever.



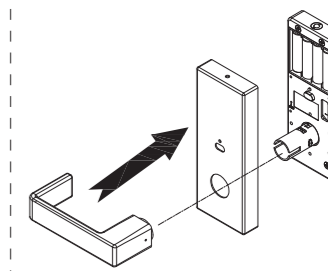
2: Pull off the lever and the inside escutcheon.



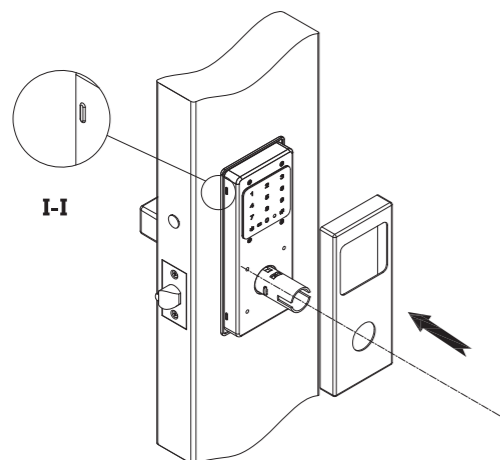
3: Replace Batteries/Reset the program.



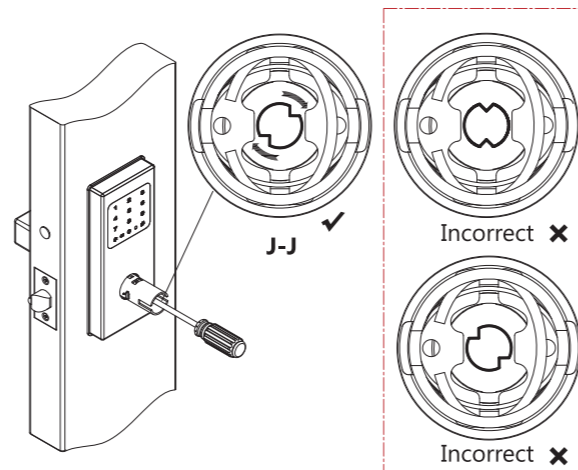
4: Install the inside escutcheon and the lever.



Step 13: Install the Outside escutcheon plate first and make sure it snaps into place via the bumps on the sub rose. See I-I.

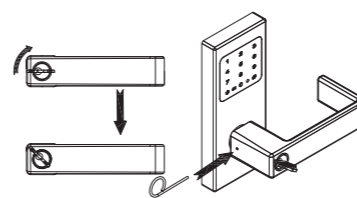


Step 14: Use a screw driver to rotate the cam in the post on the outside assembly until the cam is located in shown position. See J-J.

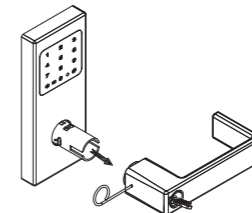


Change the handing of outside lever

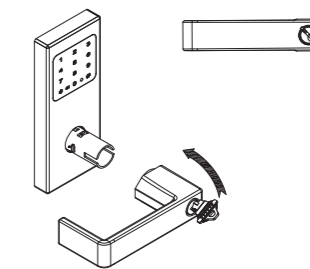
1: Rotate the key clockwise approximately 45 degrees. Press the pin Wrench into the hole on the side of the lever.



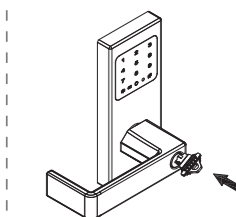
2: Pull off the lever.



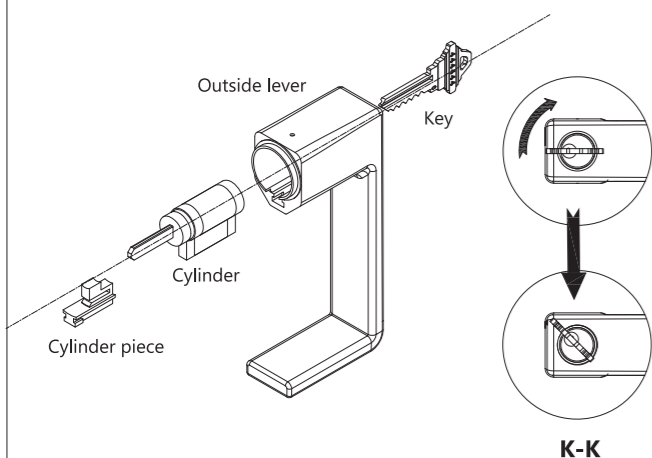
3: Rotate the lever in the opposite direction to change the handing.



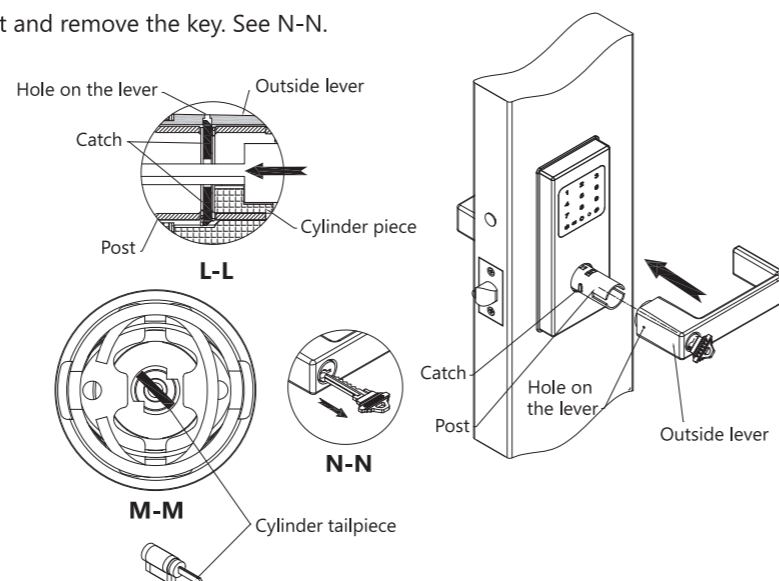
4: Reinstall the lever.



Step 15: Cylinder and outside lever installation. Insert cylinder into lever first, and then insert the cylinder piece into the notch in the lever. Insert the key and rotate the key clockwise approximately 45 degrees. See K-K.

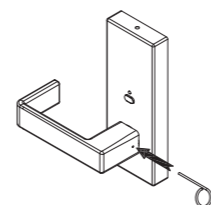


Step 16: Press the outside lever towards the post. Make sure the hole on the side of lever is seated and locked in the catch on the post. See L-L. Cylinder tailpiece goes through the cam. See M-M. Reset and remove the key. See N-N.

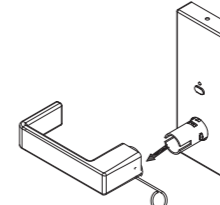


Change the handing of inside lever

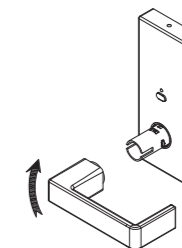
1: Press the pin wrench into the hole on the side of the lever.



2: Pull off the lever.



3: Rotate the lever in the opposite direction to change the handing.



4: Reinstall the lever.

