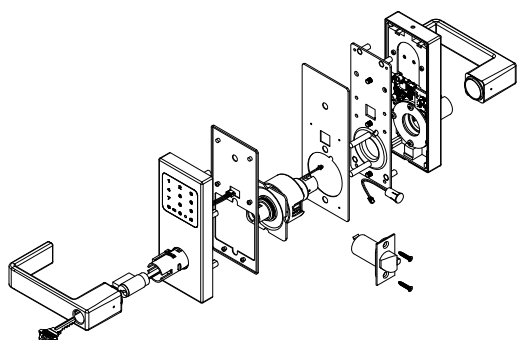




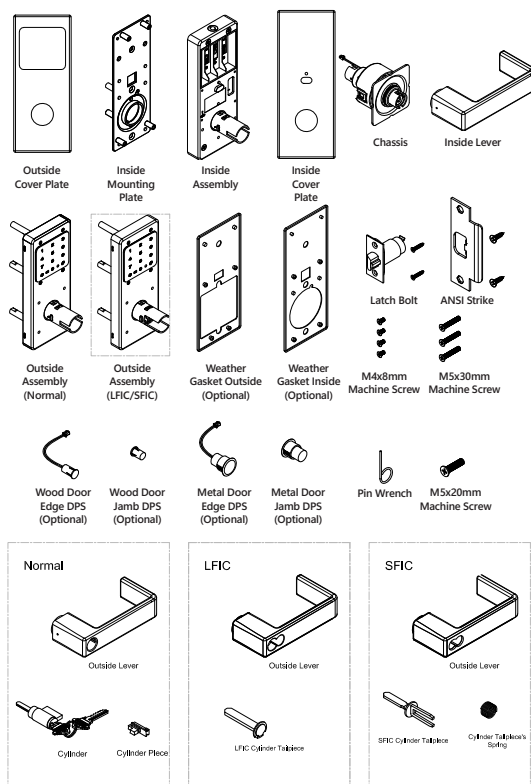
Cylindrial Smart Lock Installation Instructions

PM-ISISC6100
V20250417

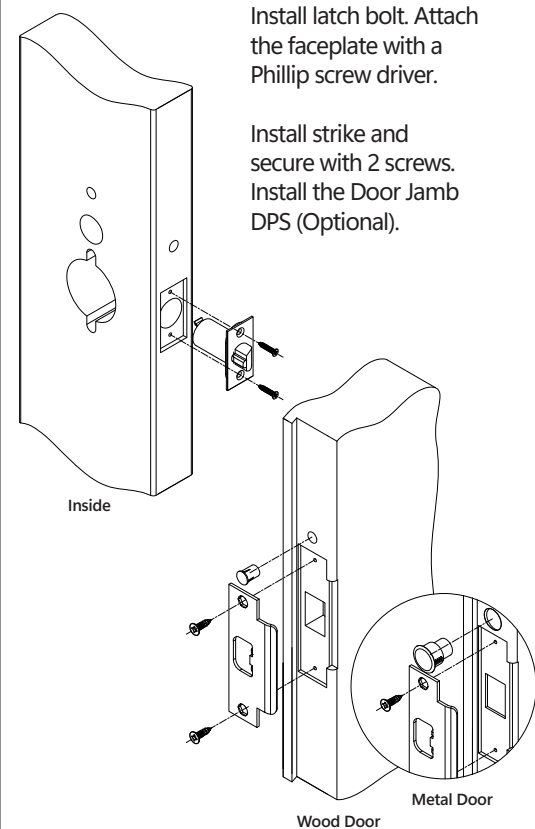


www.inoxproducts.com

Components List



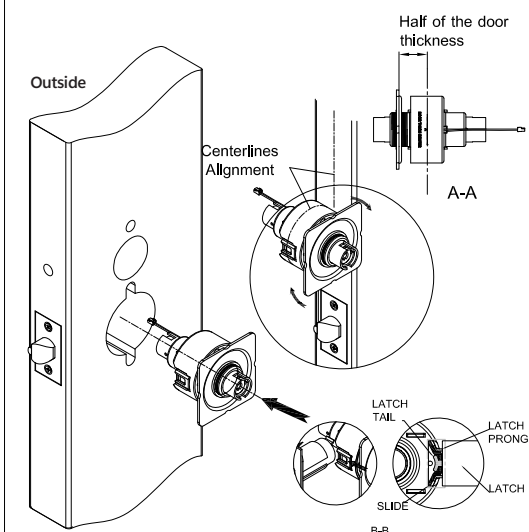
Step 1:



Step 2:

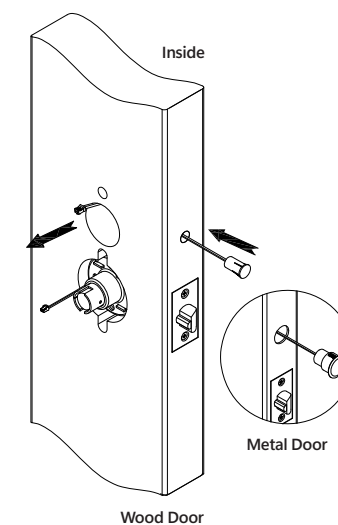
Align the centerline of the chassis with the centerline of the door. Thread the outside mounting plate onto the chassis and turn until the backside of the mounting plate sits flush on door face. (The clearance from the centerline of the chassis to the mounting plate is the half of the door thickness. See A-A.)

Install the chassis in the cutout. Guide the motor cable through the cutout. Make sure the latch tail fits inside the slide and the latch prongs engage the chassis housing. See B-B.



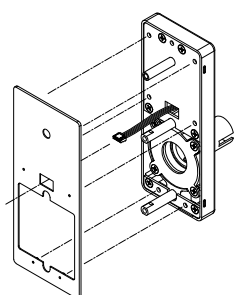
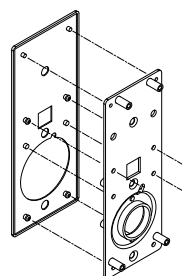
Step 3:

Install the Door Edge DPS. (Optional) Press the sensor into the top hole on the edge of the door and pull the wires through the top hole on door face.



Step 4:

Install Interior Weather Gasket (Optional). Ensure all bumps on the gasket are depressed into the round holes on the inside mounting plate.



Install Exterior Weather Gasket (Optional).

Mounting the weather gasket onto the outside subrose.

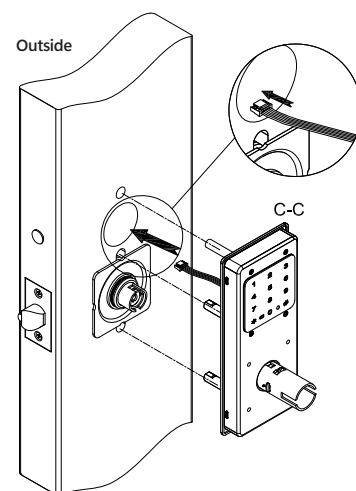
Ensure all bumps on the gasket are depressed into the round holes on the subrose.

Step 5:

Install Exterior Weather Gasket (Optional).

Mounting the weather gasket onto the outside subrose.

Ensure all bumps on the gasket are depressed into the round holes on the subrose.

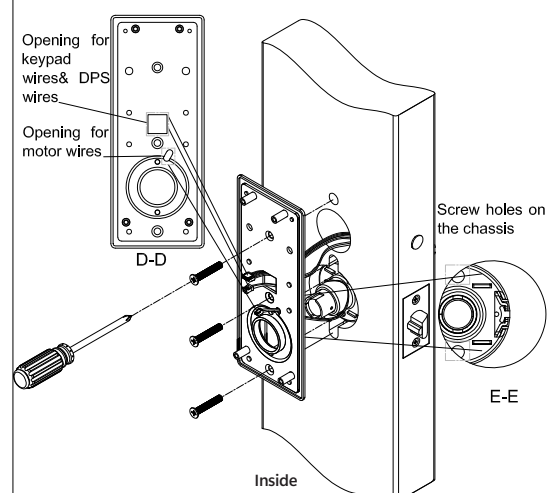


Step 6:

Install the inside mounting plate. Make sure to route the wires (keypad wires, DPS wires, and motor wires) through the cutouts indicated on the mounting plate (See D-D).

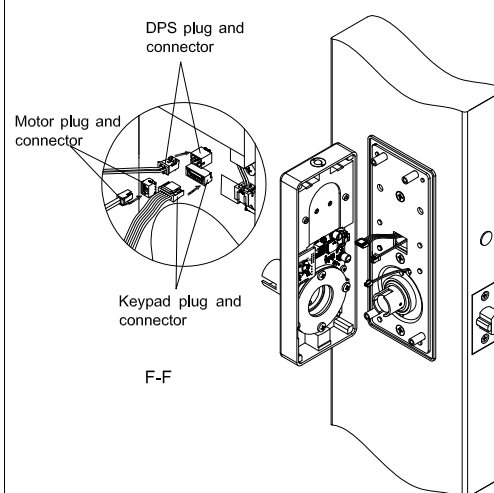
Make sure the two bolts on the inside mounting plate to go through the up and down screw holes on the chassis (See E-E).

Secure the inside mounting plate with the screws provided.



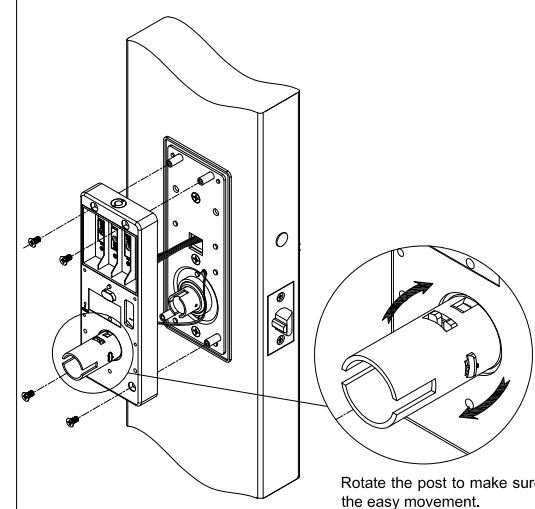
Step 7:

Plug in the wires (keypad wires, DPS wires, and motor wires) on the inside assembly. See F-F.



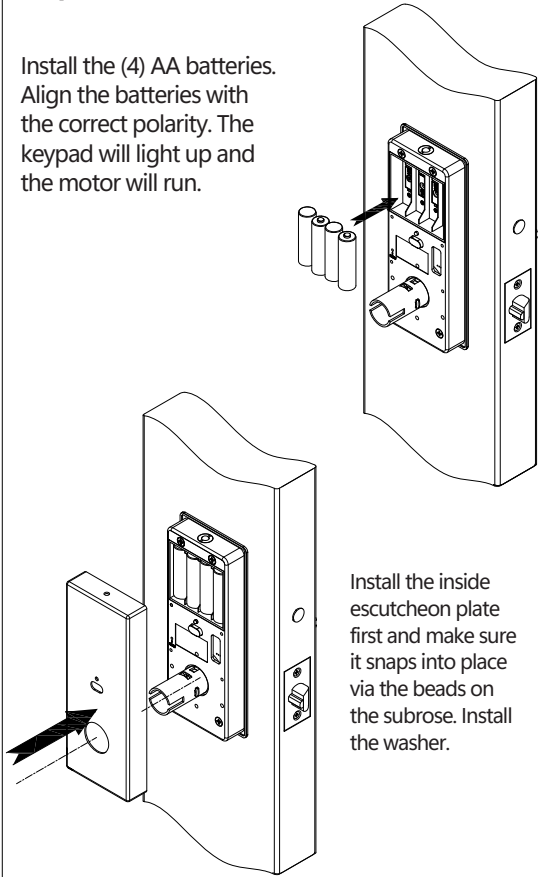
Step 8:

Install the inside assembly with 4 screws. Do not pinch wires. Then please rotate the post on the inside assembly to make sure it can be easily moved around. If there is a jam, please repeat Step 2 and 3.



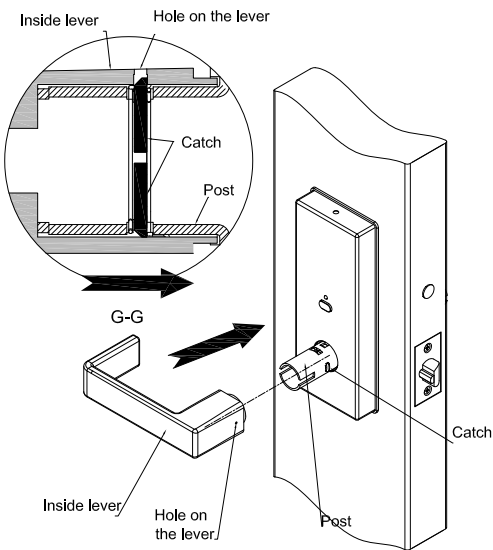
Step 9:

Install the (4) AA batteries. Align the batteries with the correct polarity. The keypad will light up and the motor will run.



Step 10:

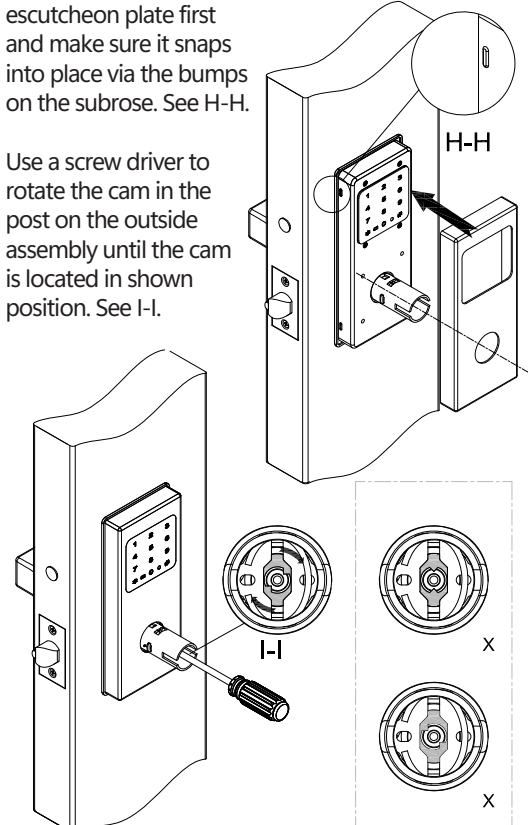
Press the inside lever towards the post. Make sure the hole on the side of the lever is seated and locked in the catch on the post. See G-G.



Step 11:

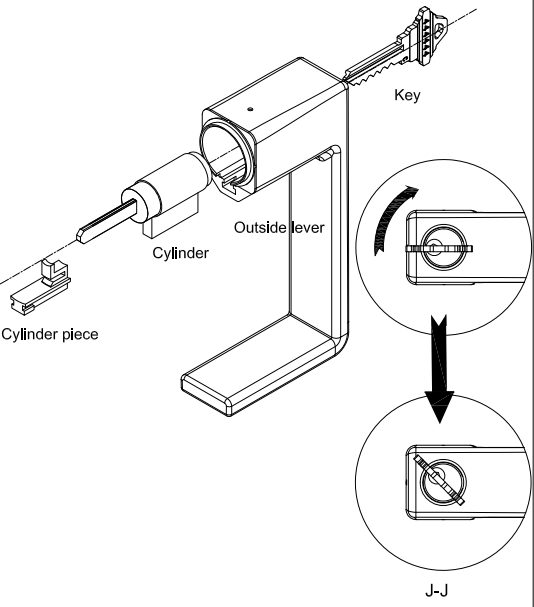
Install the Outside escutcheon plate first and make sure it snaps into place via the bumps on the subrose. See H-H.

Use a screw driver to rotate the cam in the post on the outside assembly until the cam is located in shown position. See I-I.



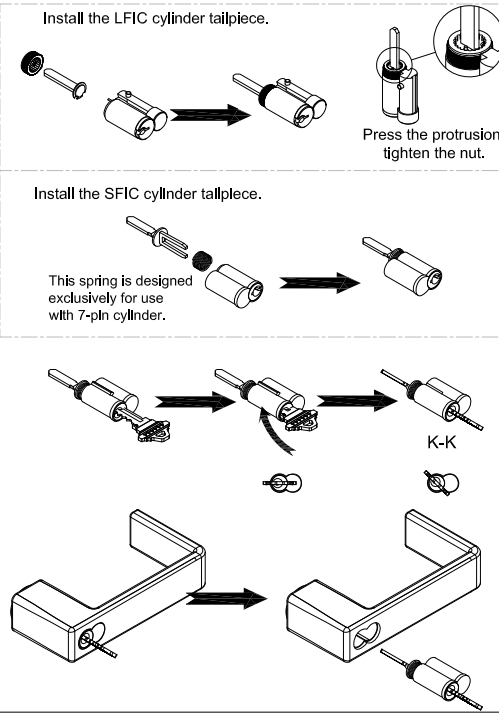
Step 12:

Cylinder and outside lever installation. Insert cylinder into lever first, and then insert the cylinder piece into the notch in the lever. Insert the key and rotate the key clockwise approximately 45 degrees. See J-J.



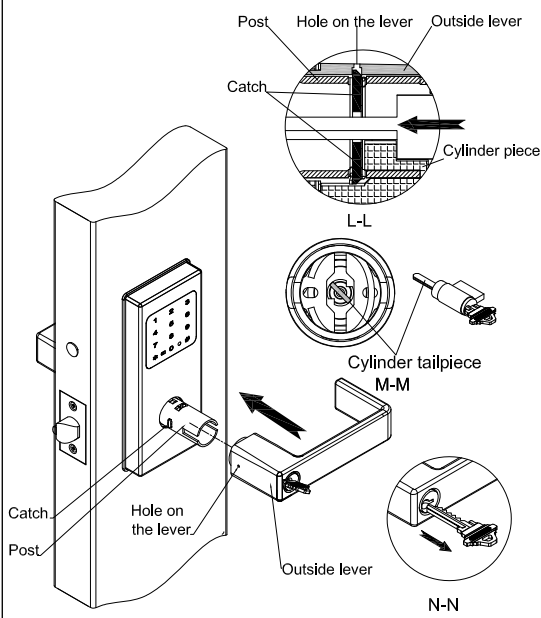
Step 12 (LFIC/SFIC):

1. Install the cylinder tailpiece.
2. Insert the key into the cylinder and rotate it until the protrusion at the bottom of the cylinder retracts. Once the catch is fully retracted, insert the cylinder into the hole of the outside lever. See K-K.



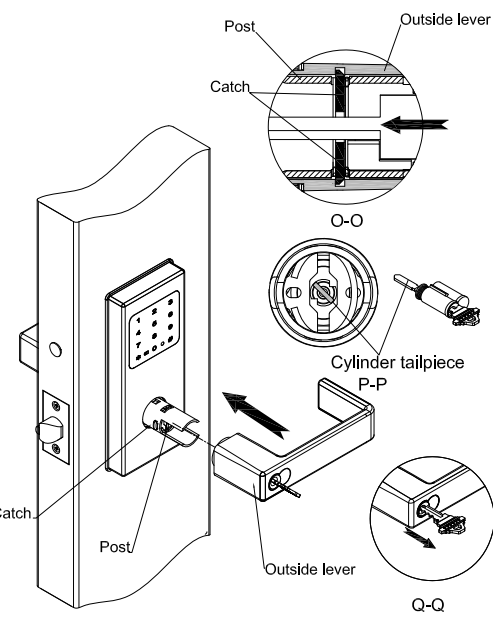
Step 13:

Press the outside lever towards the post. Make sure the hole on the side of the lever is seated and locked in the catch on the post. See L-L. Cylinder tailpiece goes through the cam. See M-M. Reset and remove the key. See N-N.



Step 13 (LFIC/SFIC):

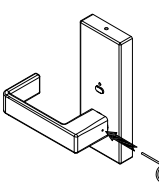
Press the outside lever towards the post. Make sure the hole on the side of lever towards the post. Make sure the hole on the side of the lever is seated and locked in the catch on the post. See O-O. Cylinder tailpiece goes through the cam. See P-P. Reset and remove the key. See Q-Q.



Replace batteries, reset the program, change the handing of inside lever.

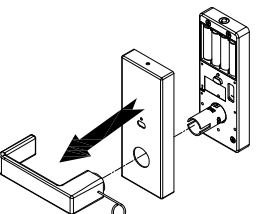
Step 1:

Press the pin wrench into the hole on the side of the lever.



Step 2:

Pull off the lever, washer and the inside escutcheon.



Step 3:

Replace Batteries
Reset the program
Press the pin wrench into the "RESET" hole on the inside subrose

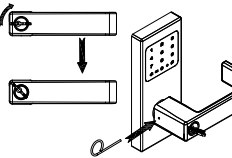
Step 4:

Mount the outside cover plate.
When installing the lever, the handing of the lever can be adjusted directly.

Change the handing of outside lever.

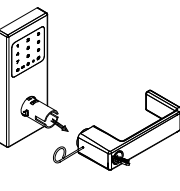
Step 1:

Rotate the key clockwise approximately 45 degrees.
Press the pin wrench into the hole on the side of the lever.



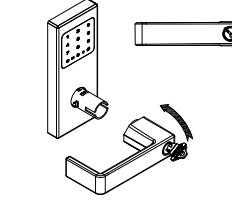
Step 2:

Pull off the lever.



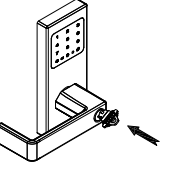
Step 3:

Rotate the lever to the opposite direction to change the handing.



Step 4:

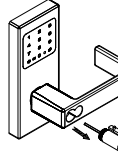
Reinstall the lever.



Change the handing of outside lever. (LFIC/SFIC)

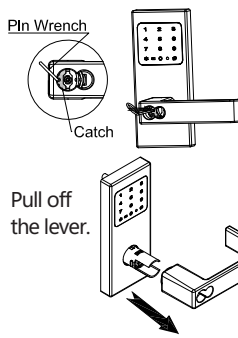
Step 1:

Rotate the key clockwise.



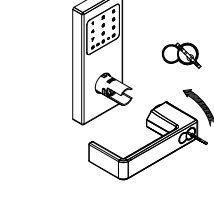
Step 2:

Pull out the cylinder.
Pull off the lever.



Step 3:

Install the lever and cylinder according to the step 14. Rotate the lever to the opposite direction to change the handing.



Step 4:

Reinstall the lever.

